

<http://www.gradsch.hku.hk>
<http://hub.hku.hk>

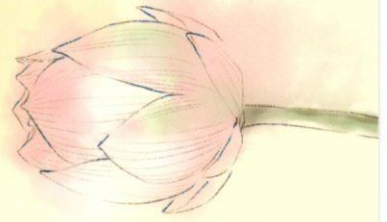


MPhil and PhD Studies

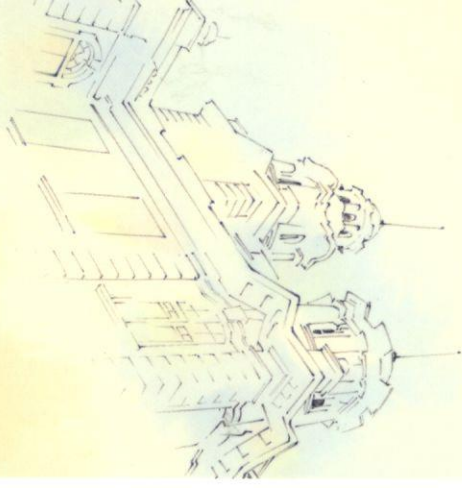
Fellowships and Scholarships

- Hong Kong PhD Fellowships (HKPF)
US\$30,760 (HK\$240,000) per year
- University Postgraduate Fellowships (UPF)
At least US\$26,390 (HK\$205,900) per year**
- Postgraduate Scholarships (PGS)
At least US\$24,150 (HK\$188,400) per year*

* Combined value of UPF and PGS
Subject to revision



HKU Institution of Choice MPhil and PhD Studies



The University of Hong Kong



<http://www.gradsch.hku.hk>
<http://hub.hku.hk>



MPhil and PhD Studies

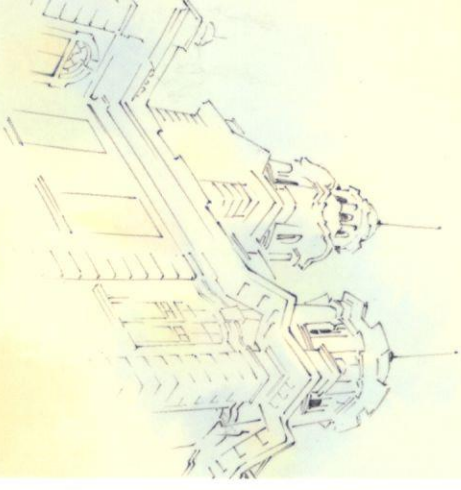
Fellowships and Scholarships

- Hong Kong PhD Fellowships (HKPF)
US\$30,760 (HK\$240,000) per year
- University Postgraduate Fellowships (UPF)
At least US\$26,390 (HK\$205,900) per year**
- Postgraduate Scholarships (PGS)
At least US\$24,150 (HK\$188,400) per year*

* Combined value of UPF and PGS
Subject to revision

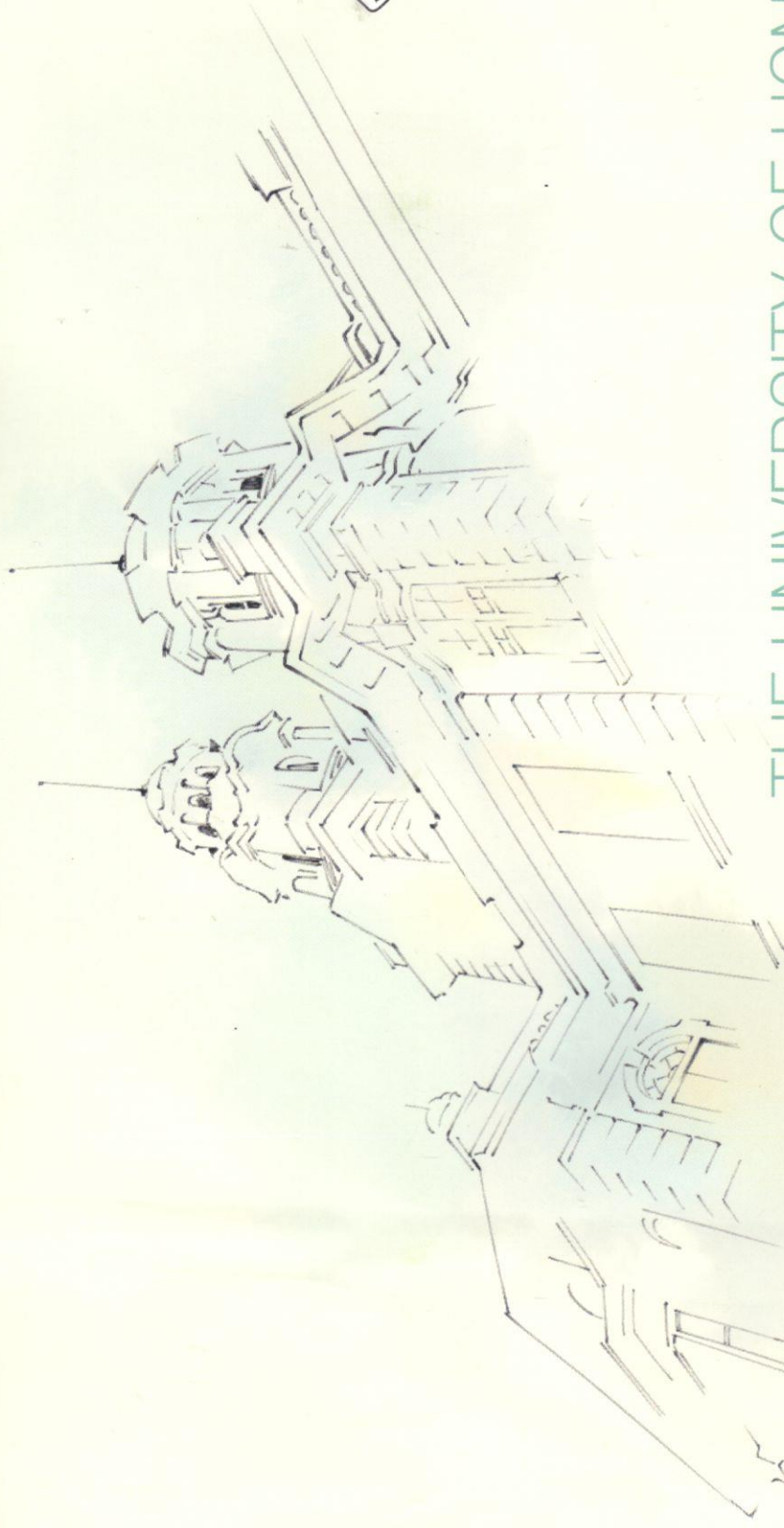
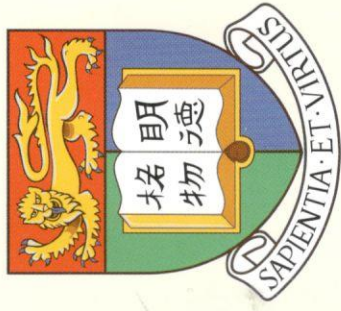


HKU Institution of Choice MPhil and PhD Studies



The University of Hong Kong





THE UNIVERSITY OF HONG KONG

MPhil and PhD Studies

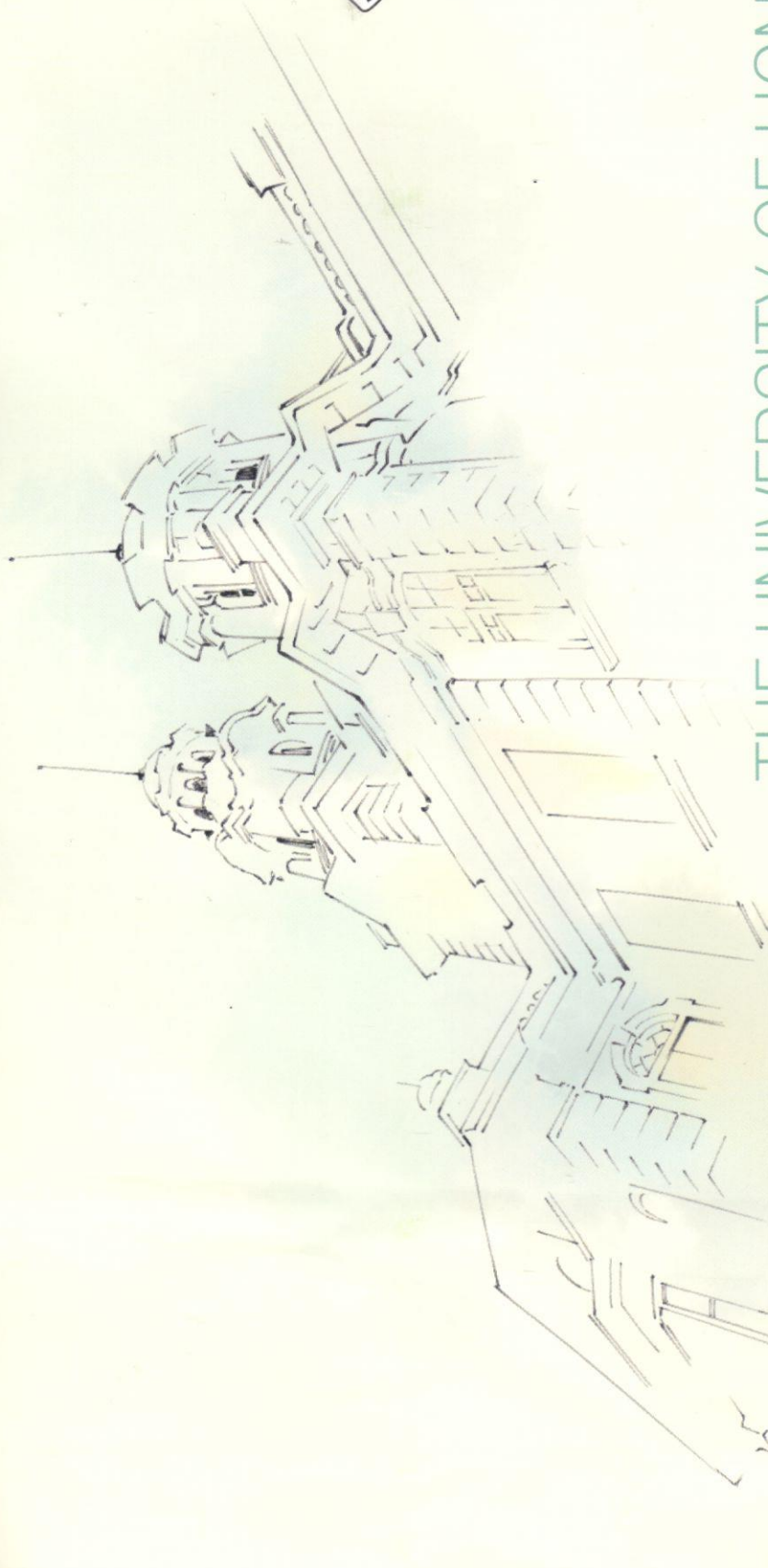
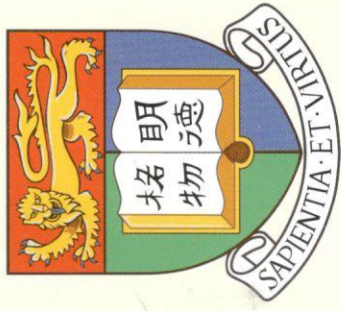
2018-19

Highlights

- Ranked 27th in the world in 2016 *Quacquarelli Symonds (QS) World University Rankings*
- Inspiring teachers with international vision

Architecture

Engineering



THE UNIVERSITY OF HONG KONG

MPhil and PhD Studies

2018-19

Highlights

- Ranked 27th in the world in 2016 *Quacquarelli Symonds (QS) World University Rankings*
- Inspiring teachers with international vision

Architecture

Engineering



THE UNIVERSITY OF HONG KONG

香 港 大 學



June 30, 2017

Dear Sir/Madam,

It is my pleasure to inform you that The University of Hong Kong (HKU) has set up various Fellowships and Scholarships for outstanding students from universities all over the world who would like to pursue full-time PhD studies in HKU. For example, the Hong Kong PhD Fellowship awards an amount of HK\$240,000 (US\$30,760) per year plus conference and research-related travel allowance of HK\$10,000 (US\$1,280) per year to selected full-time PhD candidates. All full-time MPhil and PhD students who hold a first degree with second-class honours first division (or equivalent) or above are normally considered eligible to receive a Postgraduate Scholarship of at least HK\$188,400 (US\$24,150) per year during the normative study period. Candidates' results in Master's degrees may also be considered.

2. Enclosed please find 3 copies of posters, leaflets and bookmarks with details of the Fellowships and Scholarships for you. I would be grateful if you could please consider posting the above materials at your University's international office, library or anywhere suitable to let the students in your University know about the Fellowships and Scholarships for MPhil and PhD Studies. If you have further queries, please do not hesitate to contact us at gradsch@hku.hk. We look forward to receiving applications from the students of your University.

3. Thank you in advance for your kind assistance.

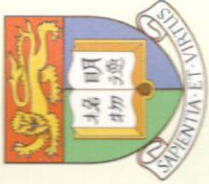
Yours sincerely,

Professor D.-Y. Jin
Associate Dean
(Internationalisation and Partnership)
Graduate School

Encl.

GRADUATE SCHOOL 研究學院

Room P403, Graduate House, The University of Hong Kong, Pokfulam Road, Hong Kong
Tel : (852) 2857-3470 Fax : (852) 2857-3543 Email : gradsch@hku.hk URL : www.hku.hk/gradsch



Research Studies at One of the Top Universities in the World

THE UNIVERSITY OF HONG KONG 2018-19

Fellowships and Scholarships Available

- Hong Kong PhD Fellowship (HKPF) Scheme
US\$30,760 (HK\$240,000) per year
- HKU University Postgraduate Fellowships (UPF)
At least US\$26,390 (HK\$205,900) per year**
- Postgraduate Scholarships (PGS)
At least US\$24,150 (HK\$188,400) per year*

* Combined value of UPF and PGS

** Subject to revision

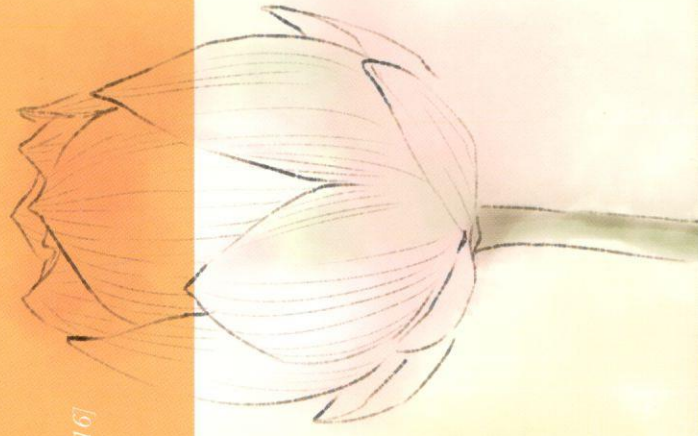
The **University of Hong Kong (HKU)** is Hong Kong's oldest university. As an **English-medium** university with a history that stretches back more than 100 years, it has grown with and helped shape the city from which it takes its name.

Today, HKU is recognized internationally as a dynamic and comprehensive university of **world-class standing**. With its distinguished excellence in research and outstanding performance in teaching, it attracts **first-class teaching and research staff and brilliant students** from around the world.

The University's research students enjoy opportunities to work with leading international researchers and a peer group of resourceful and committed students from different nations in advanced facilities, producing cutting-edge and internationally recognized research work, and developing skills essential for future careers and lifelong learning.

HKU ranked 27th best university in the world

(Quacquarelli Symonds (QS) World University Rankings 2016)



High quality supervision

At HKU, supervisors are dedicated to providing guidance and support to their research postgraduate students in the pursuit of research excellence.

What our students say*

“Dr Chow has been an excellent mentor, teacher and supervisor. As a research postgraduate student under her supervision, I have been inspired by her passion for research and teaching. Dr Chow is not only knowledgeable in research methodology, she teaches us to ask constructive research questions that can benefit the society. I have learned more under the supervision of Dr Chow than I have in any classroom through her method of experiential learning where we all have hands-on experience with data sets, teaching tutorials, research and literature review. The successful experience in muddling through the process develops our confidence to move on our own studies.”

Monica BORSCHHEL, PhD student of Dr Amy Y.M. CHOW, Dept of Social Work and Social Administration

“Professor Loo’s approach has been extremely useful in helping me accustoming myself quickly to the standards and expectations of academia. Within the first year of my doctoral studies, I already made three presentations at local and overseas conferences. This experience, made possible by Professor Loo, is important because it has helped me recognize my potential as a productive research student.”

Alice CHOW, PhD student of Professor Becky P.Y. LOO, Dept of Geography

“Professor Chan pays considerable effort in encouraging her students to take part in her research projects and providing her students with sponsorship to attend international conferences so as to enable her students to explore the cutting edge of science and develop networks for collaboration with international experts. Her passion for research has influenced us and given us positive reinforcement to work hard, while enjoying the learning process. I am deeply impressed by her spirit of never giving up.”

David C.N. WONG, PhD Student of Professor Sophia S.C. CHAN, School of Nursing

“Professor Zhou has extensive contacts with research institutes and universities in China and countries in the West, enabling some of his students to gain research experience in laboratories in addition to those at HKU. For instance, I had several opportunities to work in laboratories in the United States and China as part of my PhD studies, which were very useful in establishing links to researchers that I am currently collaborating with.”

K.N. PANG, PhD student of Professor Meifu ZHOU, Dept of Earth Sciences

“Dr Shit’s passion of interacting with students, generous office hours in helping student’s learning difficulties, efforts in quality course development, and innovative teaching methods are surely a great lesson for us who will also be teachers in the future.”

Yuanyuan TANG, PhD student of Dr Kaimin SHIH, Dept of Civil Engineering

* Extracted from students’ citations published in the programme books of HKU Award Presentation Ceremony for Excellence in Teaching and Research.

Application Period for Admissions 2018-19

Hong Kong PhD Fellowship (HKPF) Scheme

Initial application to the Research Grants Council (RGC):
Early September* – **December 1, 2017 noon***

Full application to the University:
September 1 – December 1, 2017

Main round application
September 1, 2017 – **December 1, 2017**

1st clearing round
December 2, 2017 – **April 30, 2018**

2nd clearing round
May 1, 2018 – **August 31, 2018**

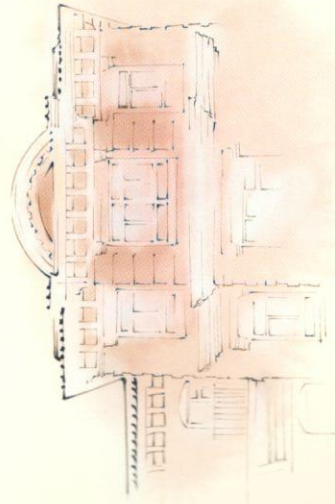
* Exact dates to be announced by the RGC at its website (<http://www.rgc.edu.hk/hkphd>)

Further information

Please visit <http://www.gradsch.hku.hk/gradsch/prospective-students/how-to-apply> for admission requirements, application procedures and other programme details.

Enquiries

Graduate School
Room P403, Graduate House
The University of Hong Kong
Pokfulam, Hong Kong
Tel: (852) 2857 3470
Fax: (852) 2857 3543
Email: gradsch@hku.hk
Homepage: www.gradsch.hku.hk



Research Postgraduate Degrees

HKU offers the following research postgraduate programmes in both full-time and part-time modes:

- Master of Philosophy (MPhil)
- 3-year Doctor of Philosophy (PhD)
- 4-year Doctor of Philosophy (PhD)
- Joint PhD Programme (between HKU and King's College London) (full-time mode only)
- Joint Educational Placement for PhD (between HKU and the University of Toronto) (full-time mode only)
- Joint Education Programme for PhD (between HKU and Southern University of Science and Technology) (full-time mode only)

Why Pursue an MPhil/PhD Degree at HKU?

High value placed on research postgraduate students at HKU

With HKU's commitment to research excellence, research postgraduate students are an important and valued part of the University. They currently represent 10% of the total student population and make a valuable contribution to the University's research work and environment.

Research excellence

HKU has won a proud reputation as a world-class comprehensive research university. Its research is of proven quality and utility, and it has a very successful record in the competitive local market for research funding. It has the highest number of awards among government-funded institutions, e.g. Areas of Excellence awards, General Research Fund awards, Croucher Foundation Senior Research Fellowships and academicians of the Chinese Academy of Sciences. HKU also has the highest number of refereed publications per academic and research staff member.

World-class teaching

HKU has been consistently pursuing a vision of high quality education and it adopts a student-centred approach in research postgraduate education. Its academics are recruited from leading universities across the world, and many are highly regarded in the global academic community.

International focus

The University has academic links with more than 400 overseas universities and hosts over 10,000 international students. About 67% of its academic staff comes from overseas. Research postgraduate students have opportunities to take part in overseas training and international research collaboration.

Wide range of fields of study

HKU offers MPhil and PhD programmes in a wide range of subjects under the Faculties of Architecture, Arts, Business and Economics, Dentistry, Education, Engineering, Law, Medicine, Science and Social Sciences.

Use of English as the medium of instruction

A distinctive position as an English-medium university in Asia is one of HKU's great strengths.

Well-designed coursework component

In addition to the long-established one-to-one mentorship system of supervision, a coursework element on discipline-specific knowledge, language and research skills is usually included to help students undertake their research work and prepare for thesis writing.

State-of-the-art support facilities

HKU's students have access to first-class libraries (with over 4.69 million e-books, 110,165 e-journals and 935 e-databases) as well as computer, and sports and leisure facilities. The University also provides residential accommodation for a proportion of its students.

Career prospects

Many of HKU's graduates are employed in high-level positions in universities, government, business and industry in Hong Kong and around the world. According to the most recent employment survey on postgraduates, over 80% of the respondents are employed and around 8.5% are furthering their studies.



Awards and Financial Assistance

Hong Kong PhD Fellowship (HKPF) Scheme

- Established in 2009 by the Hong Kong Research Grants Council (RGC).
- New applicants to full-time PhD programmes in government-funded institutions in Hong Kong, irrespective of their country of origin and ethnic background, are eligible to apply.
- Applicants should demonstrate outstanding academic performance, research ability/potential, communication and interpersonal skills, and leadership abilities.
- The HKPF provides each awardee with a monthly scholarship of HK\$20,000 (US\$2,560) and a conference and research related travel allowance of HK\$10,000 (US\$1,280) per year for a period up to three years. For HKPF awardees who are admitted to a 4-year PhD programme in 2018-19, the University will provide a monthly scholarship and travel allowance at the same level as the HKPF for their fourth year of study.

On-line application for HKPF 2018-19 opens in September 2017.

For further details, please visit <http://www.rgc.edu.hk/hkphd>.

*Note: HKPF awardees will not concurrently be awarded UPF and PGS.
HKPF does not cover Joint PhD programmes.*

University Postgraduate Fellowships (UPF)

HKU University Postgraduate Fellowships are available for selected full-time PhD applicants with an excellent academic record. The Fellowship is worth HK\$70,000 (US\$8,970), which is awarded on top of the Postgraduate Scholarship (see below)*.

* US\$2,990 per year x 3 years or US\$2,242 per year x 4 years, depending on whether it is 3- or 4-year PhD programme.

Postgraduate Scholarships (PGS)

Full-time MPhil and PhD students who hold a first degree with second-class honours first division (or equivalent) or above are normally considered eligible to receive a Postgraduate Scholarship during the normative study period. Candidates' results in Master's degrees may also be considered. The amount of PGS is HK\$15,700 (US\$2,010) per month for 2017-18 (subject to revision).

Other Scholarships and Financial support for conference attendance/travel

The University administers a number of scholarships that are awarded to postgraduate students for outstanding academic achievements. MPhil and PhD students are also eligible for financial support for conference attendance and/or travel.

Composition Fees

HK\$42,100 (US\$5,400)* per year for full-time studies and HK\$63,000 (US\$8,070)* per year for part-time (self-funded mode) studies.

* Subject to revision